



ELAD Application Notes AN-006

Using FDM-DUO with two WSJT-X instances (Ver. 1.8.0)

Contents

Introduction.....	2
1 VSPE Configuration.....	2
2 SW2 Configuration.....	3
3 WSJT-X Configuration	5

Introduction

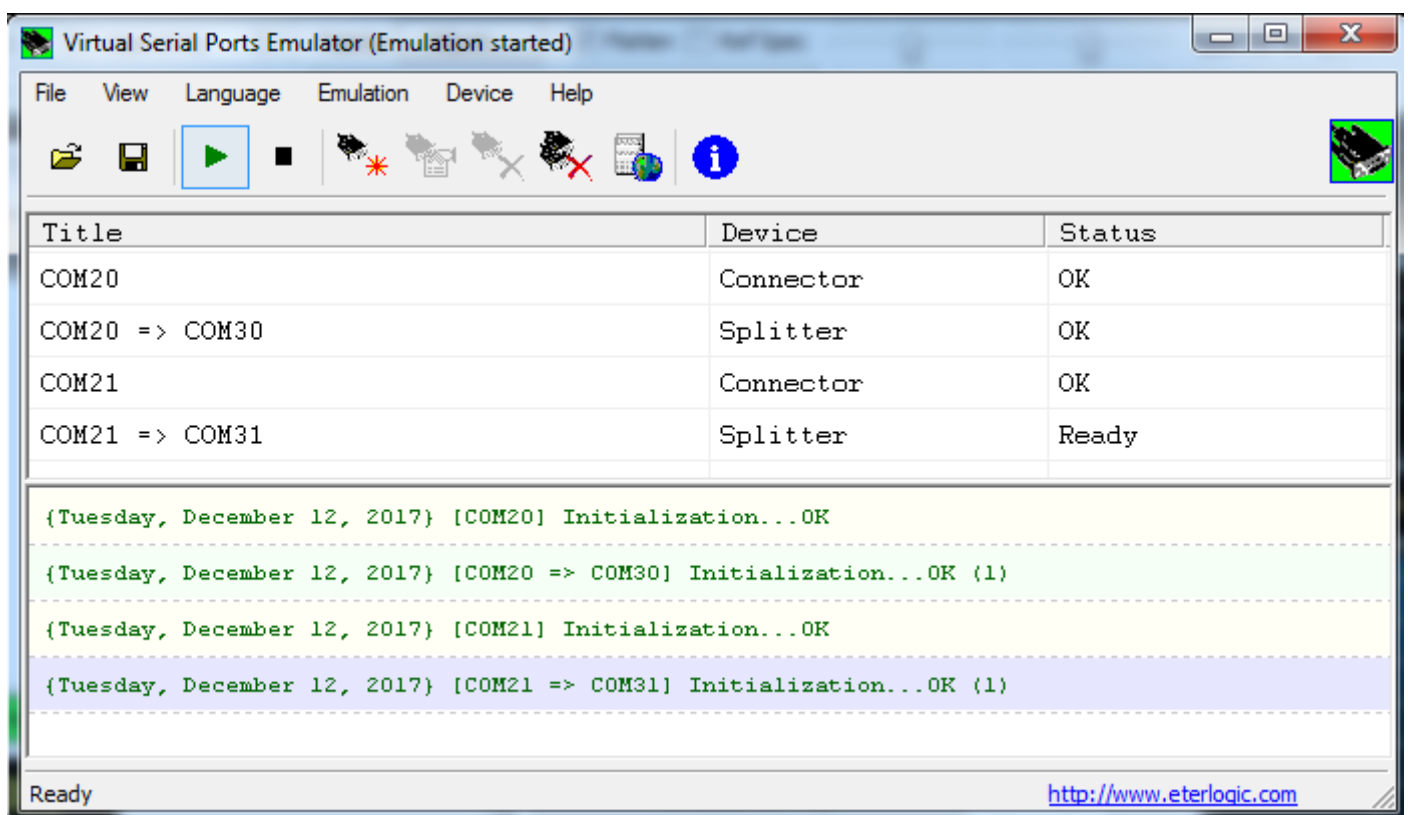
This application note describes how to use VRX CAT Mode using the first and second channel to receive signals. It also shows how to use 2 WSJT-X at the same time.

To do this we need 3 software:

- FDM-SW2 downloadable from: <http://sdr.eladit.com/FDM-sw2%20Software/index.php> (must be ver 3.000 or later)
- VSPE downloadable from here: <http://www.eterlogic.com/Downloads.html>
- WSJT-X downloadable from here: <https://physics.princeton.edu/pulsar/k1jt/wsjt.html>

1 VSPE Configuration

The first software we need to set up is VSPE as it follows:

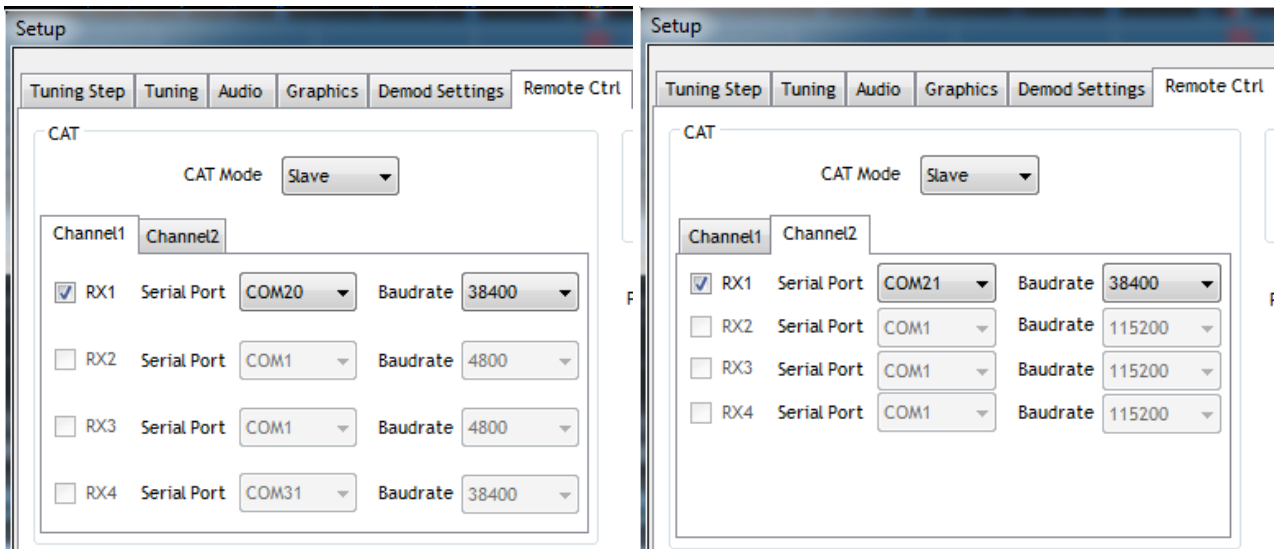


You can choose the COM number you want.

2 SW2 Configuration

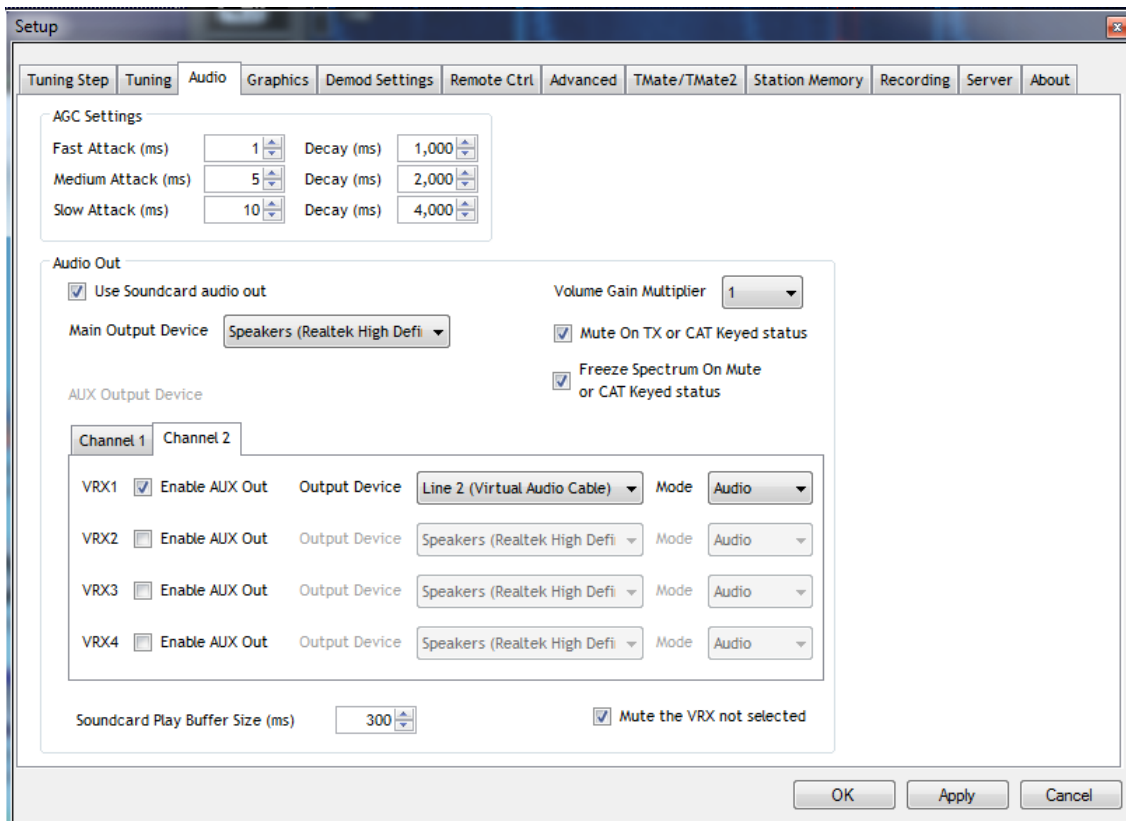
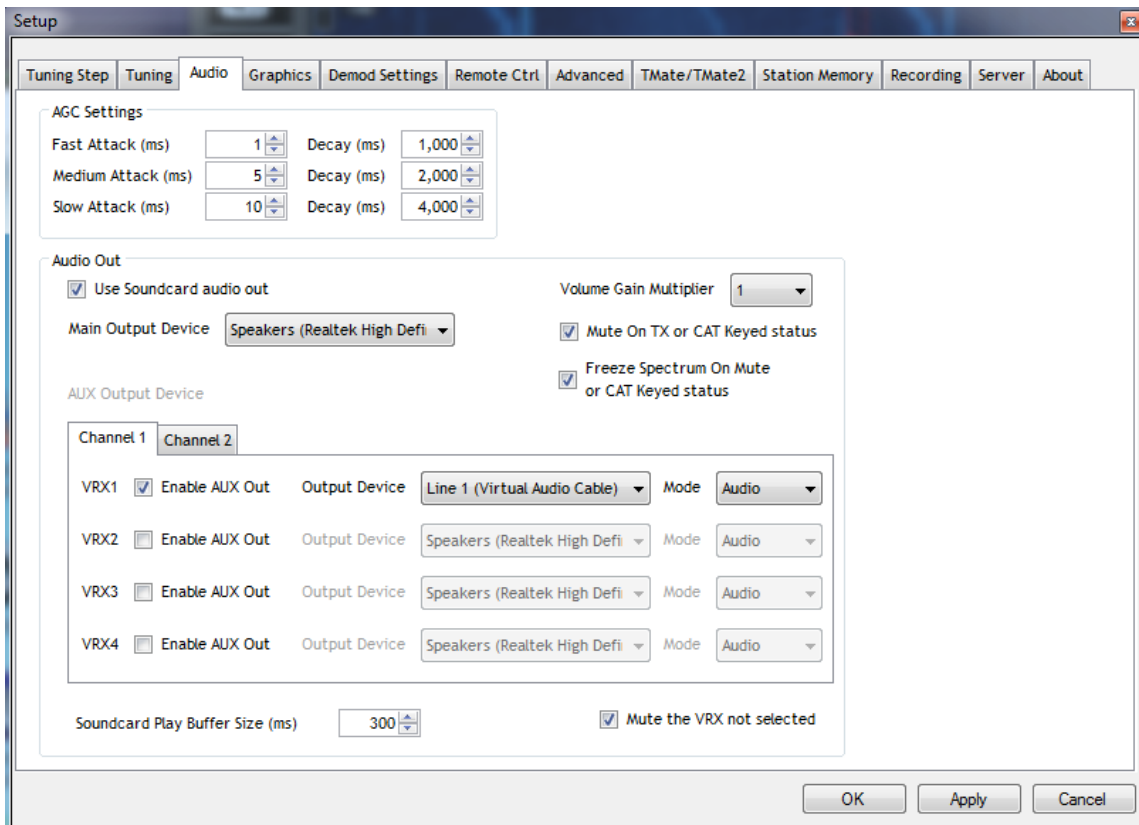
After VSPE, we need to set up SW2. Select the 2 channels option from the “Device Configuration” of the “Advanced” tab.

Next step is set up the Channels as it follows:



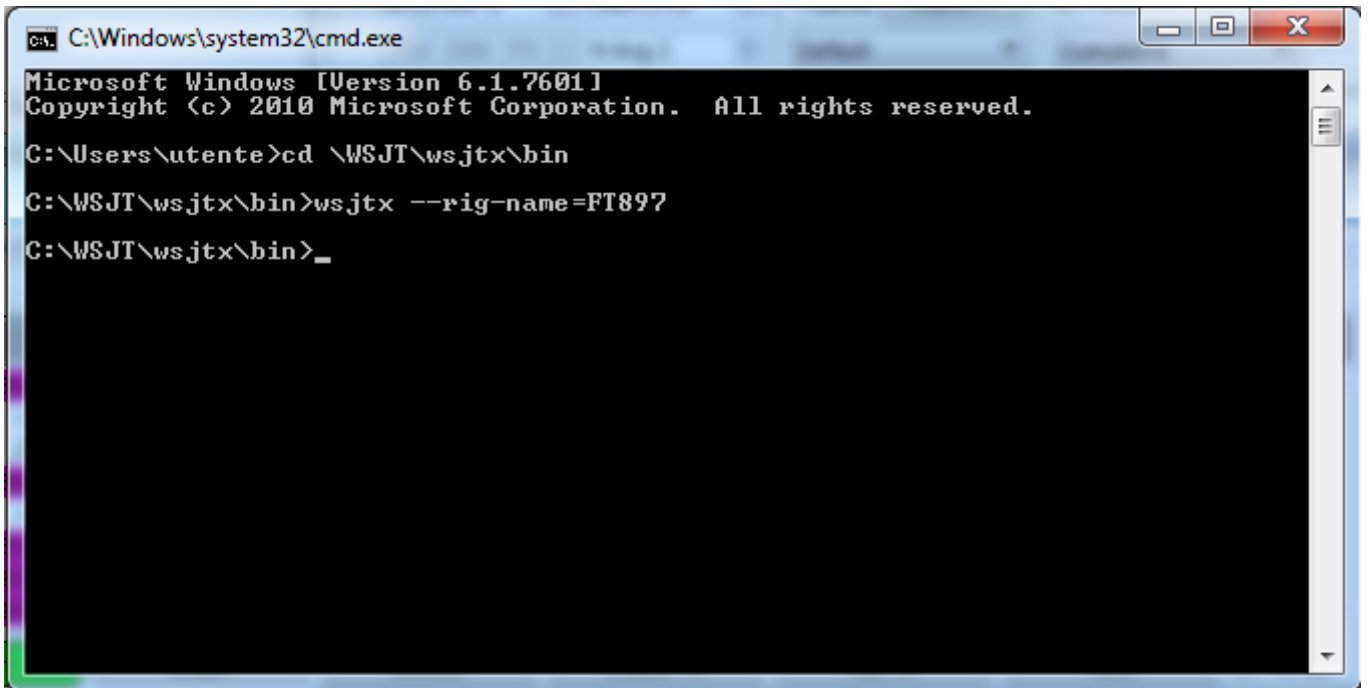
The 2 Serial Ports are the connectors created with VSPE.

Then we have to set the audio AUX OUT:



3 WSJT-X Configuration

We need 2 windows, one can be open in the usual way the second needs to be launched with the Command Prompt.



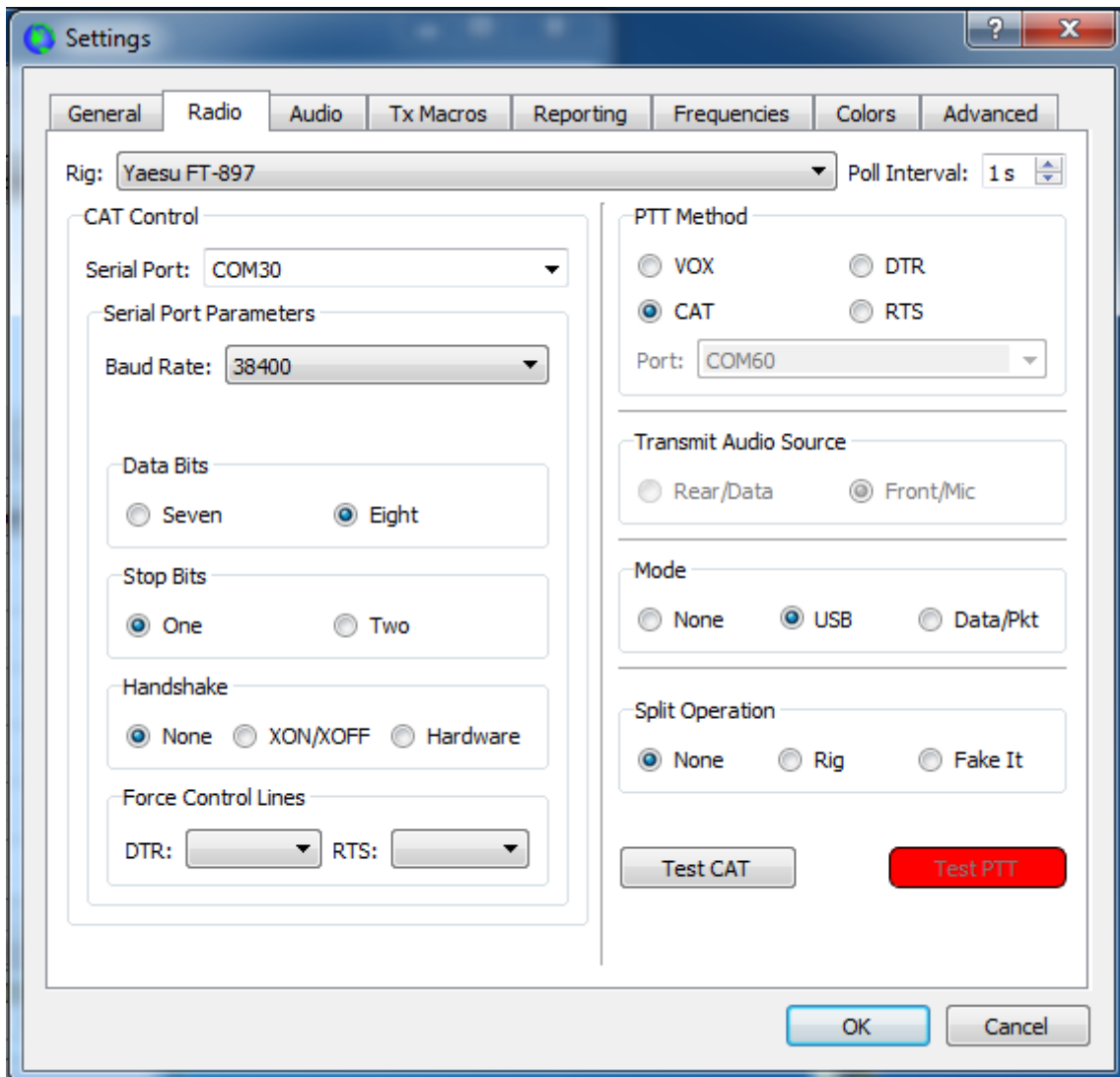
```
C:\Windows\system32\cmd.exe
Microsoft Windows [Version 6.1.7601]
Copyright (c) 2010 Microsoft Corporation. All rights reserved.

C:\Users\utente>cd \WSJT\wsjtx\bin
C:\WSJT\wsjtx\bin>wsjtx --rig-name=FT897
C:\WSJT\wsjtx\bin>_
```

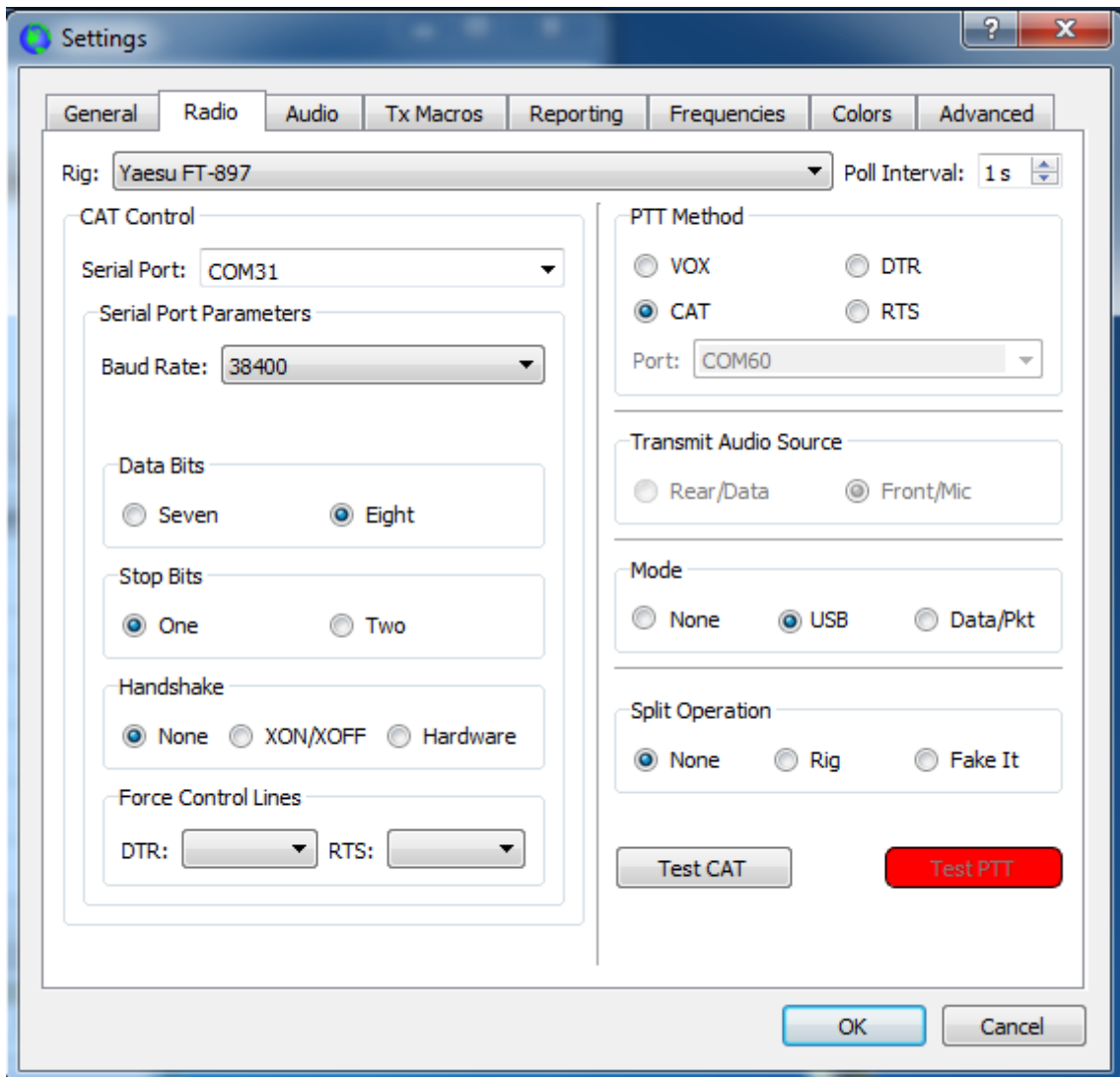
After the second WSJT-X open we can set the 2 programs in order to receive from both. When the 2 windows are opened we have to set 2 main things in each one.

Note: The following screenshots will be in the order: WSJT-X that use the first channel then the WSJT-X that use the second channel.

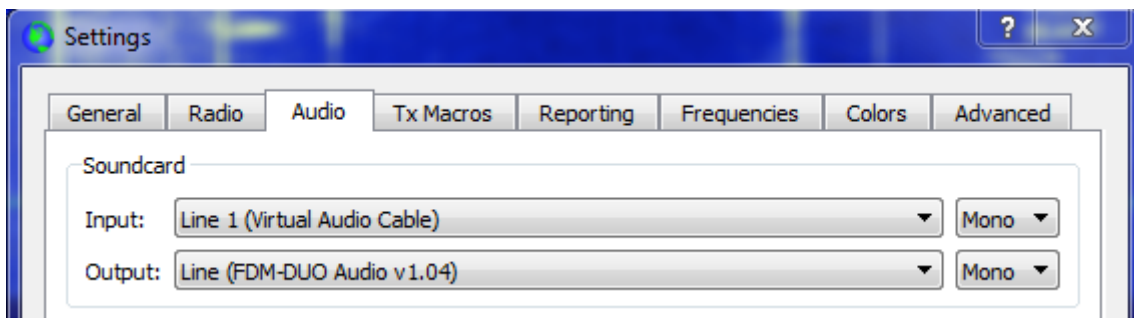
First one is in the "Radio" tab of the WSJT-X we have to set as it follows:



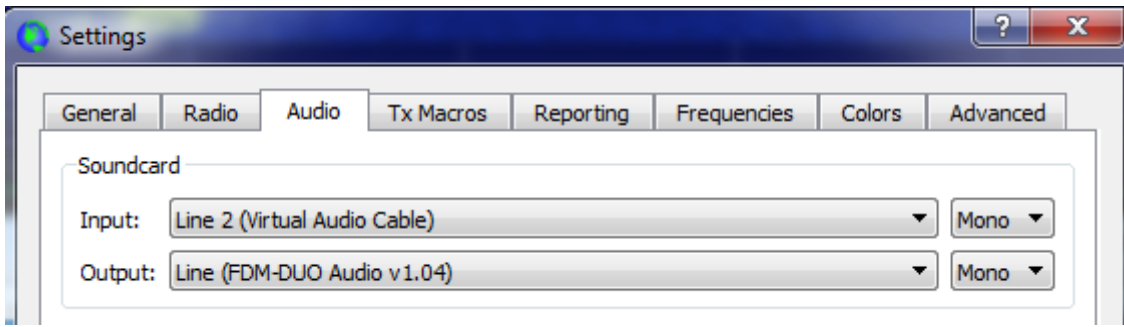
The second one has to be connected to the second channel.



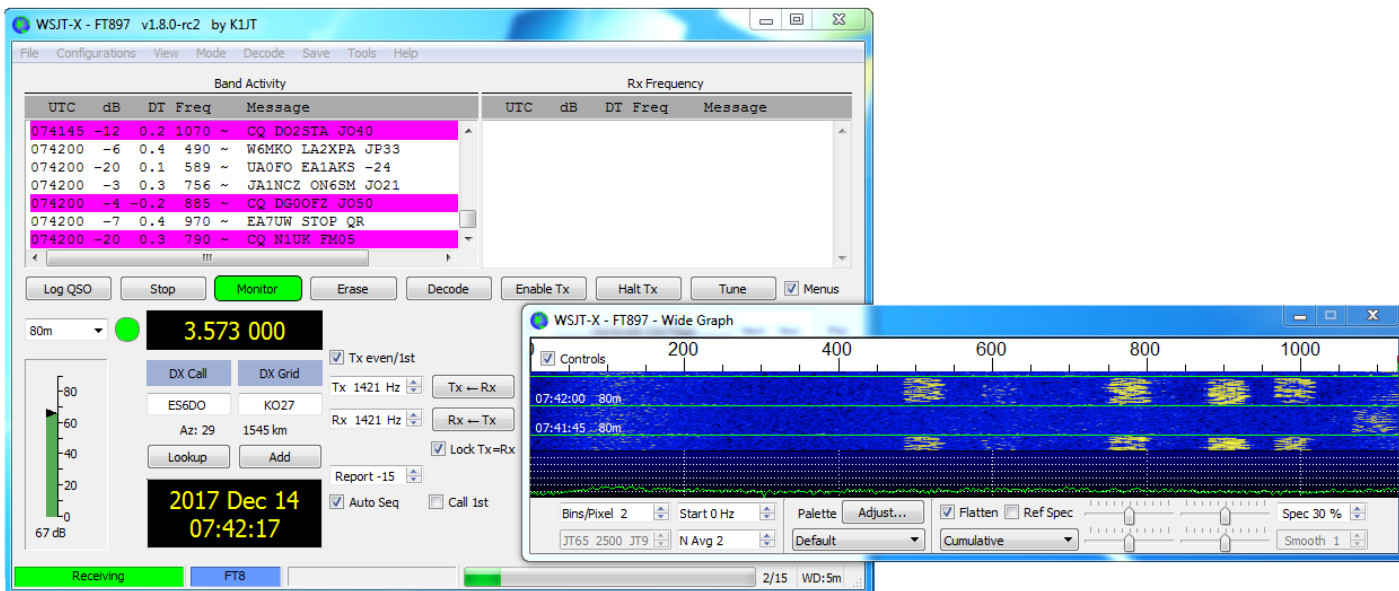
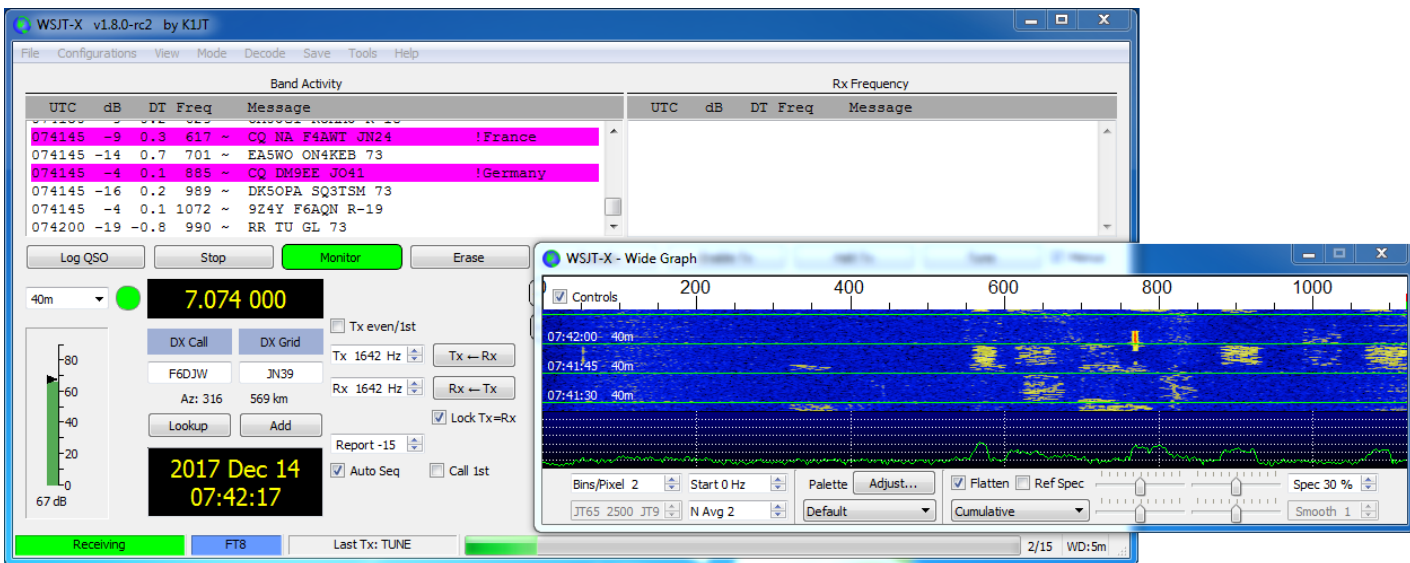
Then it's necessary set the Audio input where we'll select the Line 1 in the first one



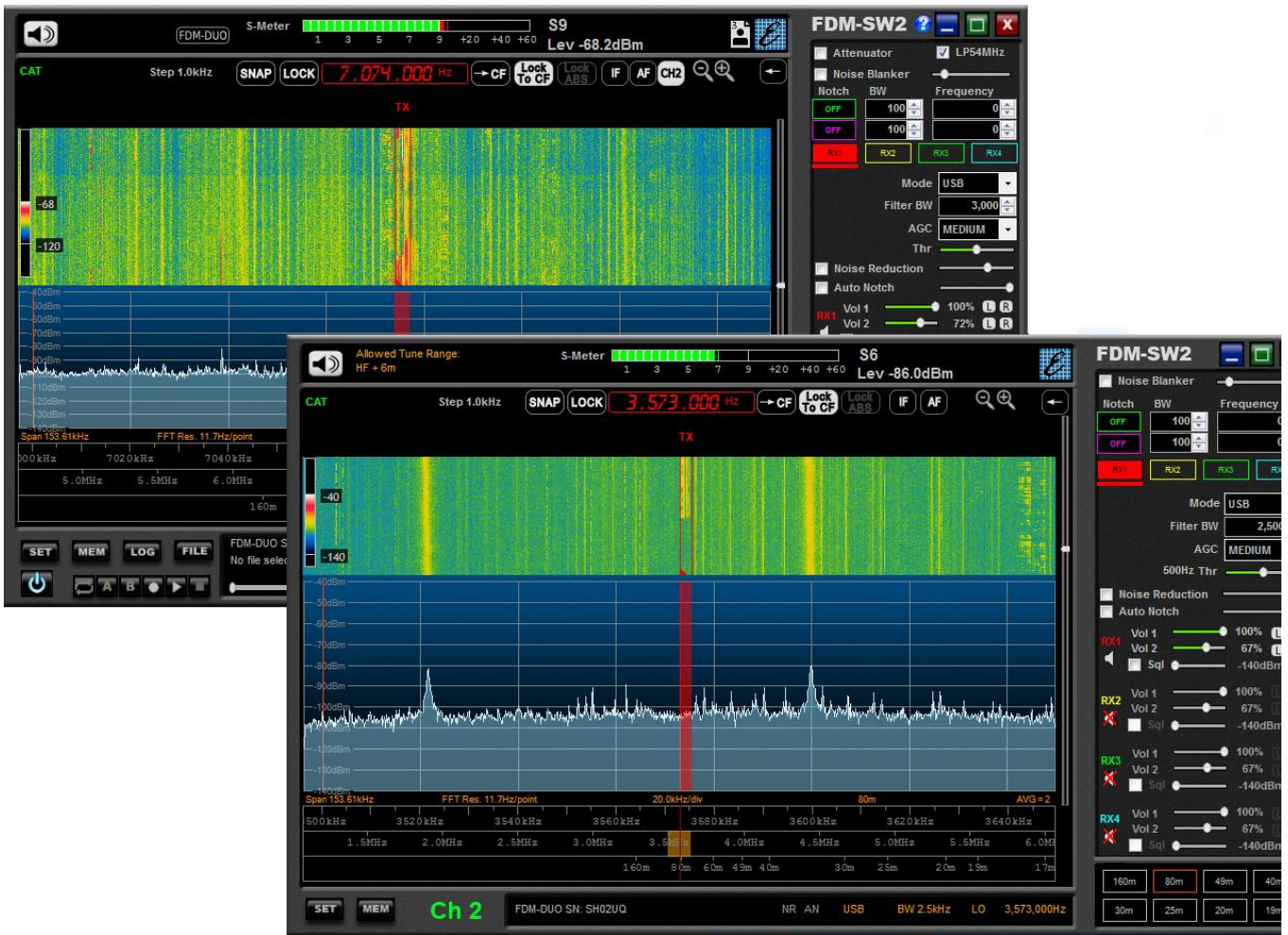
And Line 2 in the second one.



After these configurations you should receive in both Windows



And the frequencies are independent to each other.



It is recommended to activate one “Enable TX” at a time to avoid the overlay of the transmissions.